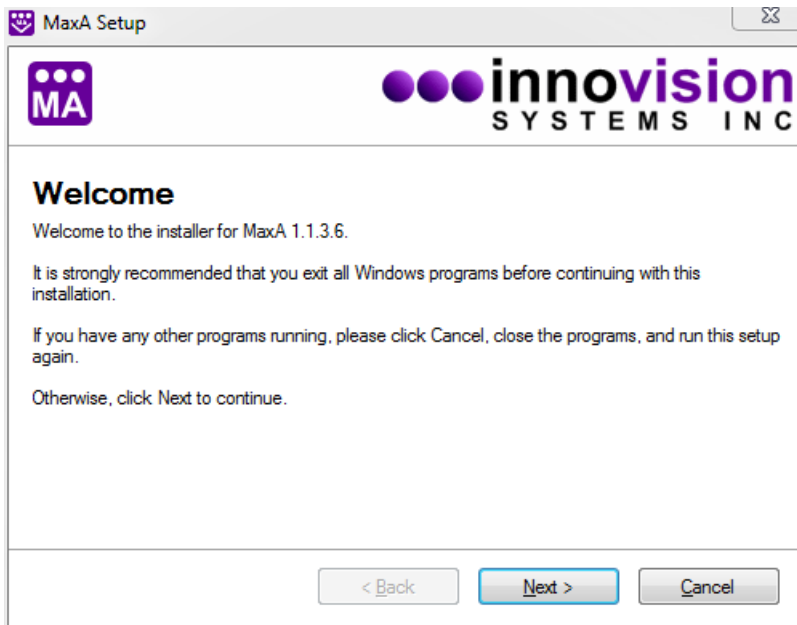


This document will guide you along in the installation of MaxA software.

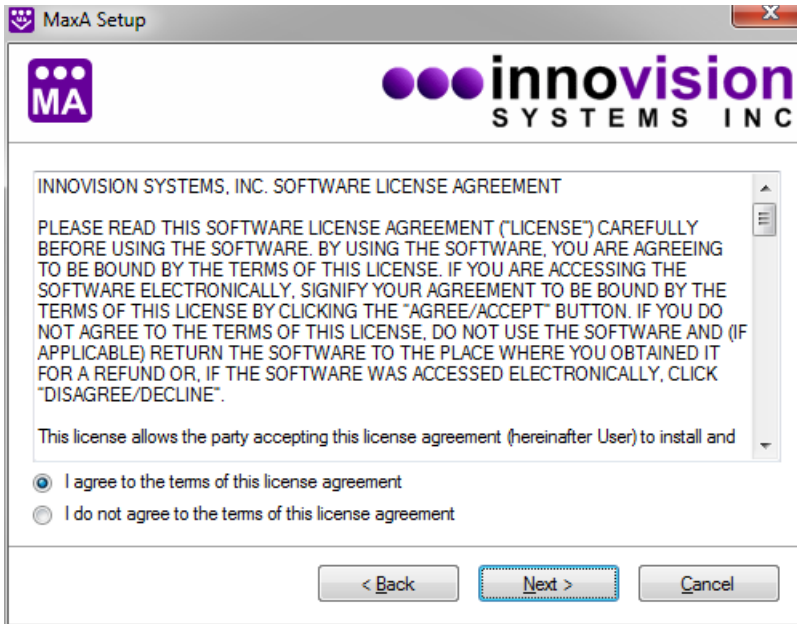
You must download MaxA from the Innovision Systems Inc. website at: www.innovision-systems.com.

Once downloaded, double click on the file to launch the installer.

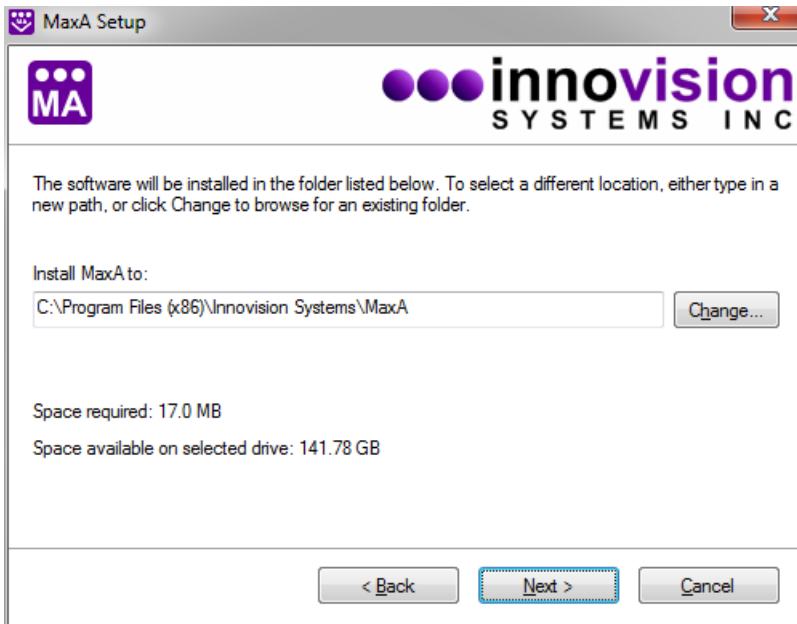
Click **Next** on the first Window.



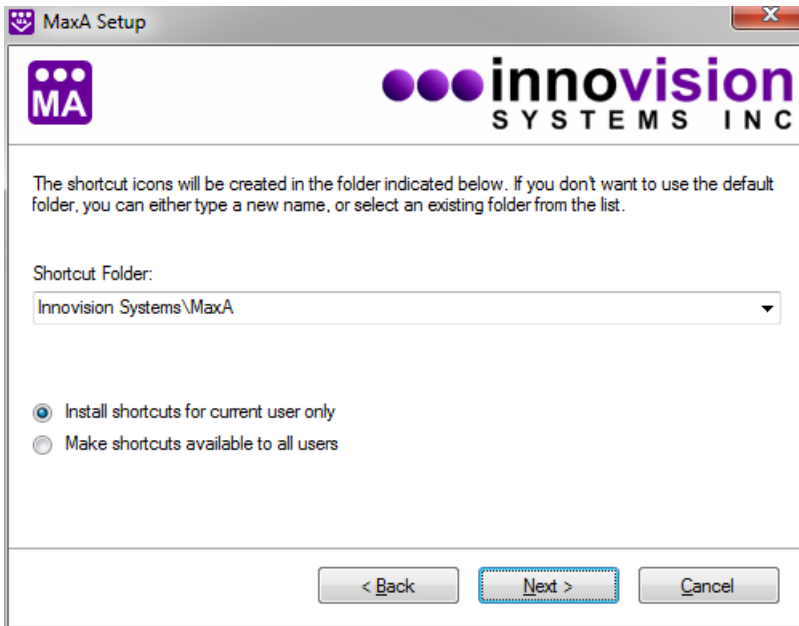
Choose to accept the license agreement. If you do not agree to the terms of the license agreement, the software will not be installed. Click **Next** after your decision.



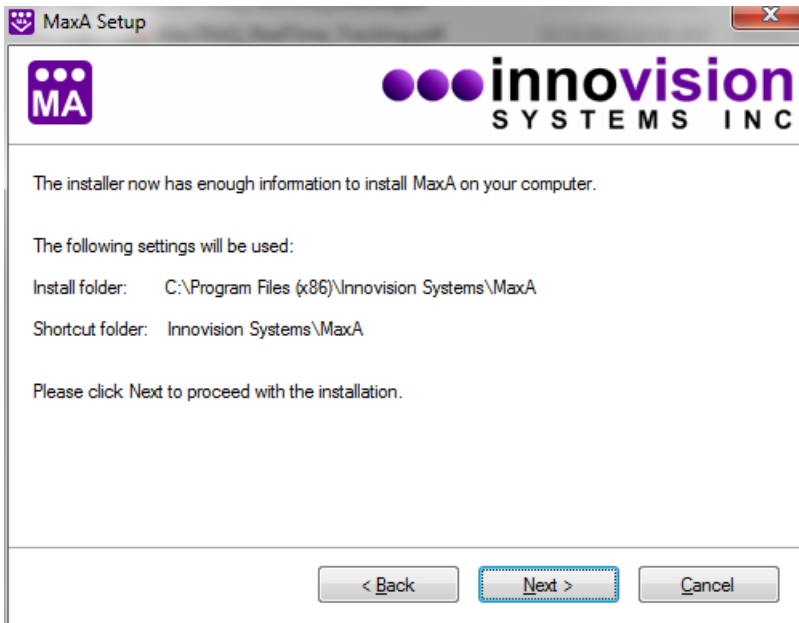
Please do not change the default directories of the installation. This will ease support personnel should you need support. Click **Next**.



Click on the option you would like for shortcuts and click **Next**.



Verify that the settings are correct and select **Next**.



The software install is now complete. Select **Finish** to exit the installer.

